

Biotinylated Human CCR6 Nanodisc



Cat. No. CCR-HM16NB

Description	
Source	Recombinant Biotinylated Human CCR6 Nanodisc is expressed from HEK293 with His tag at the C-terminus. It contains Met1-Met374.
Accession	P51684
Molecular Weight	The protein has a predicted MW of 55.4 kDa.
Endotoxin	Less than 1 EU per µg by the LAL method.

Formulation and Storage	
Formulation	Supplied as 0.22 µm filtered solution in PBS, 200mM L-Arginine (pH 7.4). Notice: Not recommended for flow cytometry in mammalian cells.
Storage	Valid for 6 months from date of receipt when stored at -80°C. Recommend to aliquot the protein into smaller quantities for optimal storage. Please minimize freeze-thaw cycles.

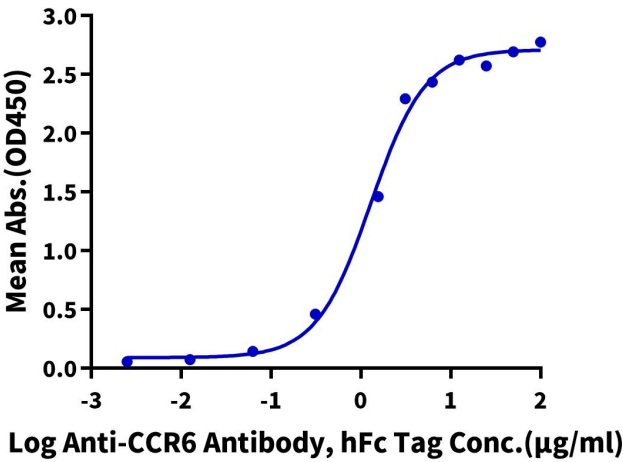
Background	
The CC chemokine receptor 6 (CCR6), a G protein-coupled receptor (GPCR) is an important receptor that is involved in regulating several aspects of mucosal immunity, including the ability to mediate the recruitment of immature dendritic cells (DCs) and mature DCs, and professional antigen presenting cells (APCs) to the sites of epithelial inflammation. Further, CCR6 mediates the homing of both CD4(+) T (T-helper; Th) cells and DCs to the gut mucosal lymphoid tissue.	

Assay Data

ELISA Data

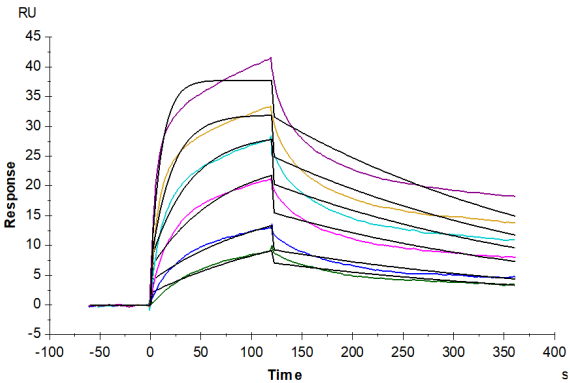
Biotinylated Human CCR6 Nanodisc, His Tag ELISA

0.5µg Biotinylated Human CCR6 Nanodisc, His Tag Per Well



Immobilized Biotinylated Human CCR6 Nanodisc, His Tag at 5µg/ml (100µl/well)on the streptavidin precoated plate (5µg/ml). Dose response curve for Anti-CCR6 Antibody, hFc Tag with the EC50 of 1.29µg/ml determined by ELISA.

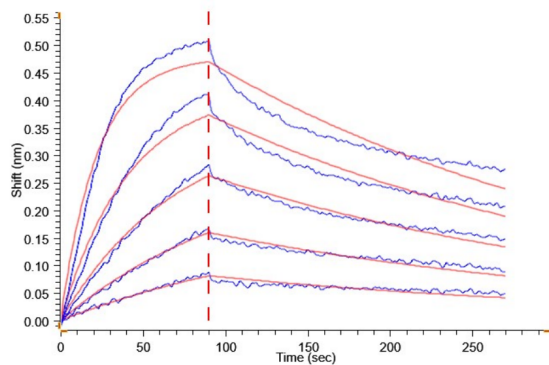
SPR Data



Biotinylated Human CCR6 Nanodisc, His Tag captured on CM5 Chip via Streptavidin can bind Anti-CCR6 Antibody, hFc Tag with an affinity constant of 3.57 nM as determined in SPR assay (Biacore T200).

BLI Data

## Assay Data



Loaded Biotinylated Human CCR6 Nanodisc, His Tag on Streptavidin-Biosensor can bind Anti-CCR6 Antibody, hFc Tag with an affinity constant of 2.28 nM as determined in BLI assay (Gator® Prime).